



GAT MONTHLY MEMBERSHIP PROGRESS REPORT

Results as of: 3/31/2023

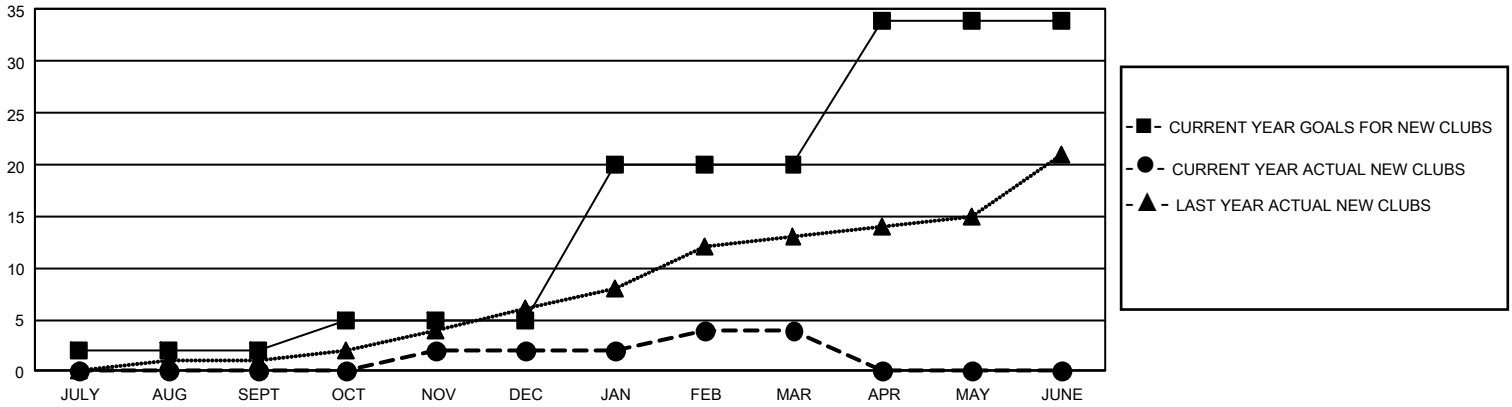
GMT Constitutional Area 4, Group E

REPORT DOES NOT INCLUDE CLUBS IN UNDISTRICTED AREAS.

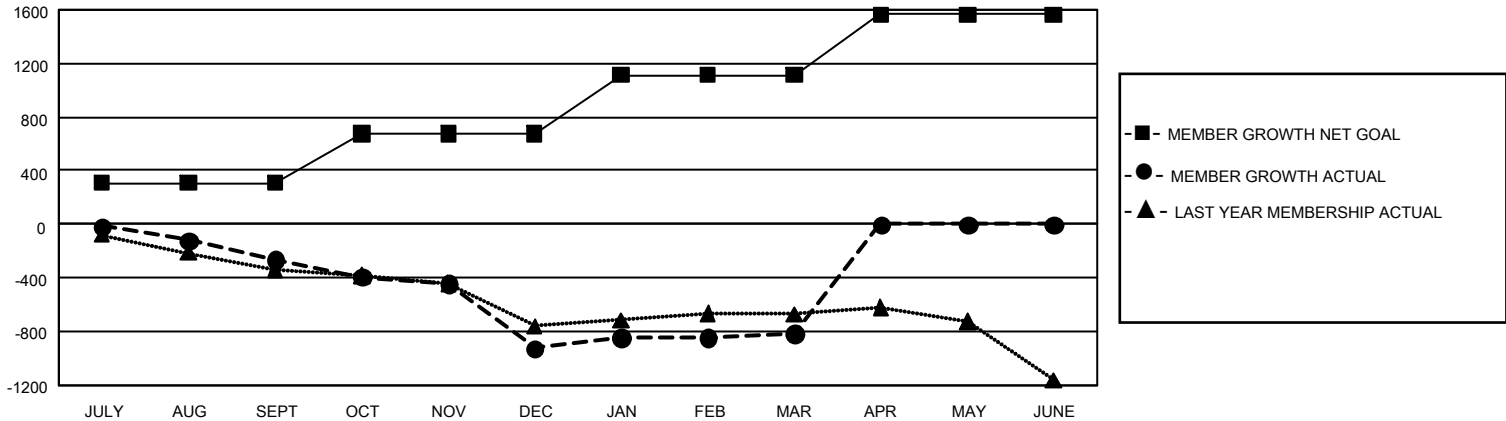
Clubs			
RESULTS FOR 2022-2023			
QUARTER	NEW CLUB GOAL	NEW CLUBS	DROPPED CLUBS
JULY/AUG/SEPT	6	0	26
OCT/NOV/DEC	9	2	9
JAN/FEB/MAR	45	2	14
APR/MAY/JUNE	42	0	0

Members			
RESULTS FOR 2022-2023			
QUARTER	MEMBER GROWTH NET GOAL	MEMBER GROWTH ACTUAL	DROPPED MEMBERS ACTUAL (including transfers)
JULY/AUG/SEPT	309	440	602
OCT/NOV/DEC	367	676	1,195
JAN/FEB/MAR	437	947	669
APR/MAY/JUNE	450	0	0

GOALS AND ACTUAL NEW CLUBS CUMULATIVE



GOALS AND ACTUAL MEMBERS CUMULATIVE



DROPPED CLUBS: 48	748 CLUBS OF 1,557 ADDED 1 OR MORE NEW MEMBERS	GENDER DISTRIBUTION	
		MALE 23,901 (74.28%) FEMALE 8,277 (25.72%) NON BINARY 0 (0.00%) PREFER NOT TO ANSWER 0 (0.00%)	
DROPPED MEMBERS		CLICK HERE FOR CUMULATIVE MEMBERSHIP DATA	TOTAL FAMILY UNIT MEMBERS 1,433
DECEASED 280 CLUB CANCELLED 138 OTHER 2,048 TOTAL 2,466	FAMILY MEMBERS PAYING HALF DUES 727		